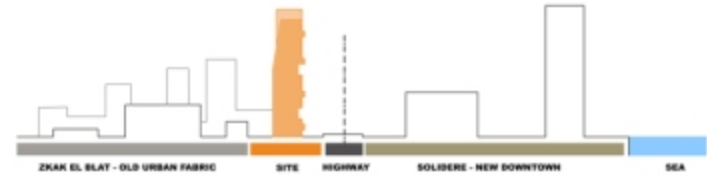


Beirut Observatory

Beirut, Lebanon
Accent Design Group



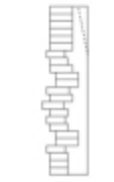
+



+



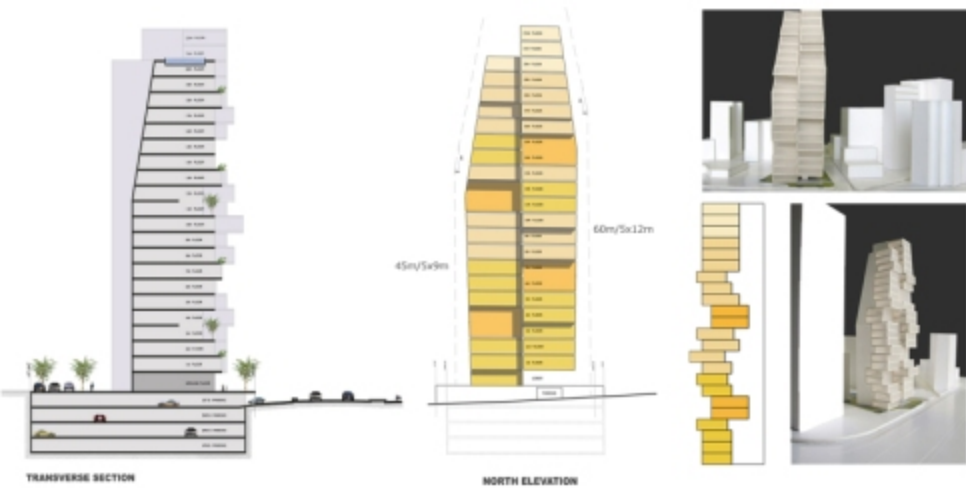
=



Mass Analysis

- Location Beirut, Lebanon
- Use Residence
- Site Area 1,200m²
- Bldg Area 11,000m²
- Gross Floor Area 415m²
- Bldg Coverage Ratio 6.5%
- Gross Floor Ratio 33%
- Bldg Scale 4 Stories below Ground, 23 Stories above Ground
- Max. Height 77m
- Landscape Area 790m²
- Architects Accent Design Group, Elie Abi
- Design Team Charbel Karami, Ahmad Khouja, Peta Ratzov





베이루트 전망대

베이루트 전망대는 이집트 달리 베이루트 시의 동서를 가로지르는 링 고속도로(The Ring Highway) 바로 옆에 위치한 주거사설이다.

좁은 시의 중앙에 위치하는 지리적 이점과 풍력을 쌓아올린 듯한 형태를 가지고 있어, 이로 인해 실내에서 시내 중심과 순교자광장, 해안을 바라볼 수 있기에 베이루트 전망대라 명명 되었다.

목적지는 계획된 영역에서 최대한의 공간을 이용할 수 있는 차별성을 가진다. 엘리베이터 첩보니와 테라스는 기존의 베이루트 도시구조에서 명함을 받았으며, 이는 층에서 도시와 해안의 수평적 전경을 바라볼 수 있게 하였다.

남쪽 동서쪽에 설치된 루버는 과도한 태양빛을 막아주고, 사생활을 보호할 뿐 아니라 외관의 통일성을 주는 요소가 된다. 이렇듯 타워는 품목요한 건축적 장식요소를 억제하면서도, 복잡한 디테일 및 프로그램의 통합을 추구하였다.

existing urban fabric of Beirut, transforming the previously horizontal spread into a vertical composition, with panoramic views of the city and the sea. Shading louvers protect from the excessive eastern and western exposure while adding privacy and providing an opportunity for a vertical 'green' screen that acts as a unifying element on the facade. This tower synthesizes between the complexity of details and programs, while avoiding the unnecessary display of architectural gymnastics, which have become a cliché of some contemporary works.

Written by Accent Design Group



This centrally located residential tower takes inspiration from the urban form of Beirut. Situated near the Ring Highway that connects East and West Beirut, and overlooking the city center, Martyrs Square and the seacoast, this residential tower operates as an 'observatory', composed of a smoothly rising stack of glazed-unit apartments, offering diversity while simultaneously creating a sense of unity. the project resolves the opposite demands of maximizing space use based on the plot area, while providing variation in the different apartments. cantilevering balconies and terraces take their cue from the typology of the



Duplex Upper Floor Plan(115m²)



Two Unit Floor Plan(210m² / 205m²)



Full Unit Floor Plan(415m²)



Duplex Lower Floor Plan(210m²)